



---

# DUAL BOOT SYSTEMS – WINDOWS XP AND WINDOWS VISTA

SIR Area 2 Computer and Technology Group – Presented by Floyd Skelton

---

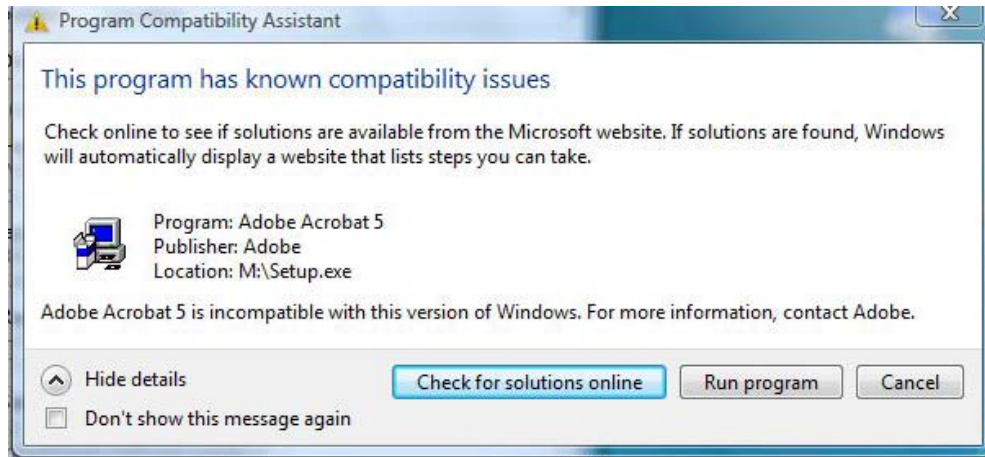


and





## DUAL BOOT SYSTEMS – WINDOWS XP AND WINDOWS VISTA



### Lack of Software Compatibility with Vista is the Primary Reason to Retain the XP Option Examples Follow:

- Adobe Acrobat 5.0 Incompatible. Alternative = Adobe Acrobat 8.1 \$159 Retail
- Partition Magic 8.0 Incompatible. Alternative = Acronis Disk Director Suite. \$49.99 Retail
- Norton Save and Restore Incompatible. Alternative = Acronis True Image Suite Home. \$49.99 Retail
- Vista Compatibility Scan of SIR Computer and Technology Group Laptop Revealed 12 Additional Software Programs with Varying Degrees of Incompatibility



## DUAL BOOT SYSTEMS – WINDOWS XP AND WINDOWS VISTA

### Vista Software Compatibility Scan Results (Page 1 of 3 — CAT Toshiba Laptop)

Programs					
Issue Type	Program	Vendor	Version	Data Source	Action Required
	TOSHIBA ConfigFree		4.90.57	Microsoft	This program must be uninstalled before upgrading to Windows Vista. After upgrading, you will not be able to reinstall the program due to compatibility issues. For more information, go to the <a href="#">vendor's website</a> .
	Norton AntiVirus	Symantec Corporation		Microsoft	This program must be uninstalled before upgrading to Windows Vista. After upgrading, you will not be able to reinstall the program due to compatibility issues. For more information, go to the <a href="#">vendor's website</a> .
	Sonic DLA	Sonic Solutions	4.90.0	Microsoft	This program must be uninstalled before upgrading to Windows Vista. After upgrading, you can try reinstalling the program. For more information, go to the <a href="#">vendor's website</a> .
	Norton SystemWorks	Symantec Corporation		Microsoft	This program must be uninstalled before upgrading to Windows Vista. After upgrading, you will not be able to reinstall the program due to compatibility issues. For more information, go to the <a href="#">vendor's website</a> .



## DUAL BOOT SYSTEMS – WINDOWS XP AND WINDOWS VISTA







### Vista Software Compatibility Scan Results (Page 2 of 3 — CAT Toshiba Laptop)

	DVD-RAM Driver			Microsoft	This program must be uninstalled before upgrading to Windows Vista. After upgrading, you can try reinstalling the program. For more information, go to the vendor's website.
Programs					
Issue Type	Program	Vendor	Version	Data Source	Action Required
	Microsoft Interactive Training			Microsoft	This program has compatibility issues and will not work in Windows Vista. For more information, go to the vendor's website.
	WinZip			Microsoft	This program might have minor compatibility issues after upgrading to Windows Vista. For more information, go to the vendor's website.
	Alps Pointing-device Driver	Alps Electric Co., Ltd.	6.0.2.180	Microsoft	This program might have minor compatibility issues after upgrading to Windows Vista. For more information, go to the vendor's website.
	ATI Desktop Component	ATI Technologies, Inc.	6.14.10.5113	Microsoft	This program might have minor compatibility issues after upgrading to Windows Vista. For more information, go to the vendor's website.



## DUAL BOOT SYSTEMS – WINDOWS XP AND WINDOWS VISTA

### Vista Software Compatibility Scan Results (Page 3 of 3 — CAT Toshiba Laptop)

	ATI Desktop Component	ATI Technologies, Inc.	6.14.10.5113	Microsoft	This program might have minor compatibility issues after upgrading to Windows Vista. For more information, go to the <a href="#">vendor's website</a> .
	Adobe Reader 7.0.8	Adobe Systems Incorporated	7.0.8	Microsoft	This program might have minor compatibility issues after upgrading to Windows Vista. For more information, go to the <a href="#">vendor's website</a> .
	Windows Messenger			Microsoft	This program might have minor compatibility issues after upgrading to Windows Vista. For more information, go to the <a href="#">vendor's website</a> .
	PowerQuest PartitionMagic 8.0	PowerQuest Corporation	8.00.000	Microsoft	This program might have minor compatibility issues after upgrading to Windows Vista. For more information, go to the <a href="#">vendor's website</a> .
	Atheros Client Utility			Microsoft	This program might have minor compatibility issues after upgrading to Windows Vista. For more information, go to the <a href="#">vendor's website</a> .
	RAMASST			Microsoft	This program might have minor compatibility issues after upgrading to Windows Vista. For more information, go to the <a href="#">vendor's website</a> .



## DUAL BOOT SYSTEMS – WINDOWS XP AND WINDOWS VISTA

### Two Paths for Vista and XP on Same System

**#1**— Existing XP System: Partition hard disk, adding partition for Vista. True “Dual-Boot System” with existing XP system retaining all capability.

Required: Vista “Upgrade”, “OEM”, or “Complete” system installation disks.

Recommended: 1.5 GHz Processor, 1Gb RAM, and 120Gb Hard Disk minimum.

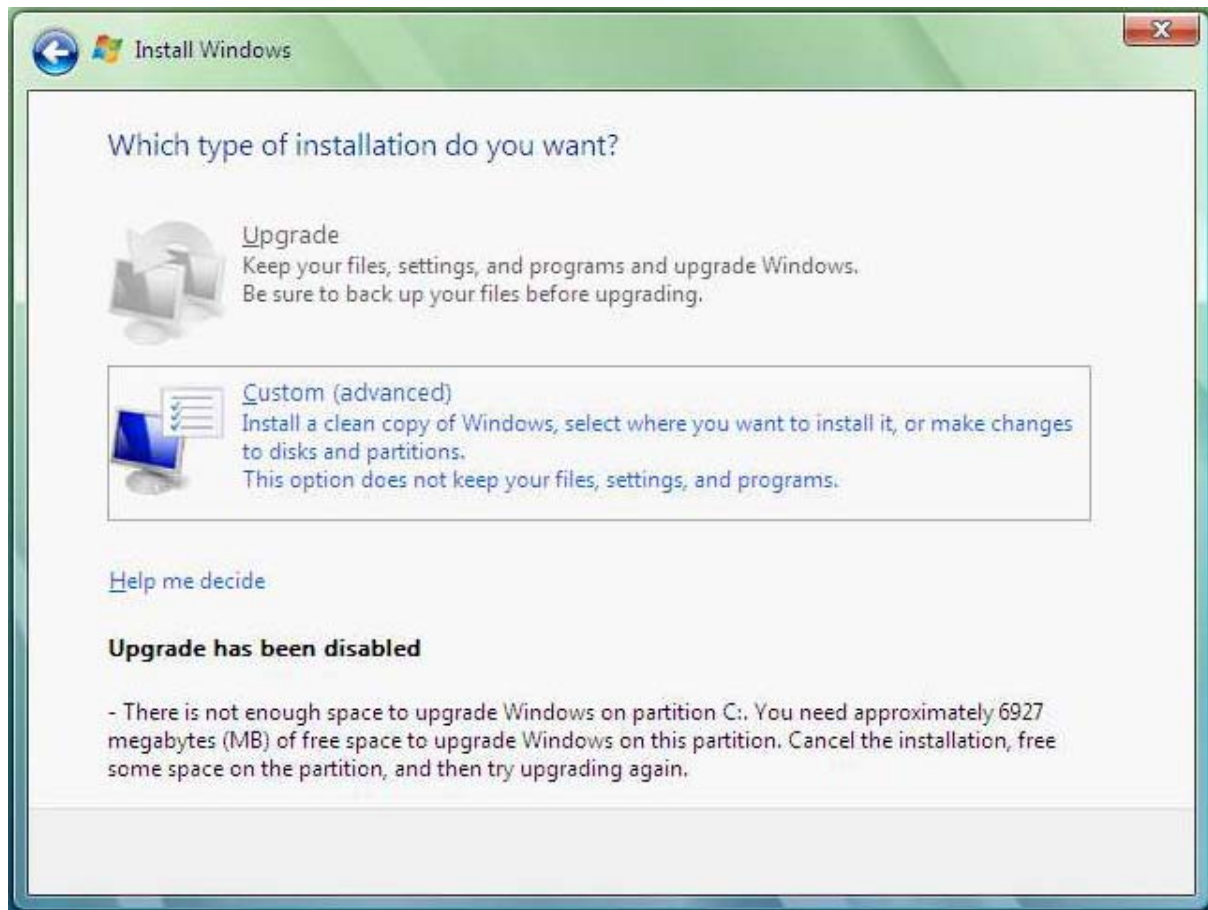
Note: XP and Vista do not run simultaneously, but require re-boot to move from system to system.





## DUAL BOOT SYSTEMS – WINDOWS XP AND WINDOWS VISTA

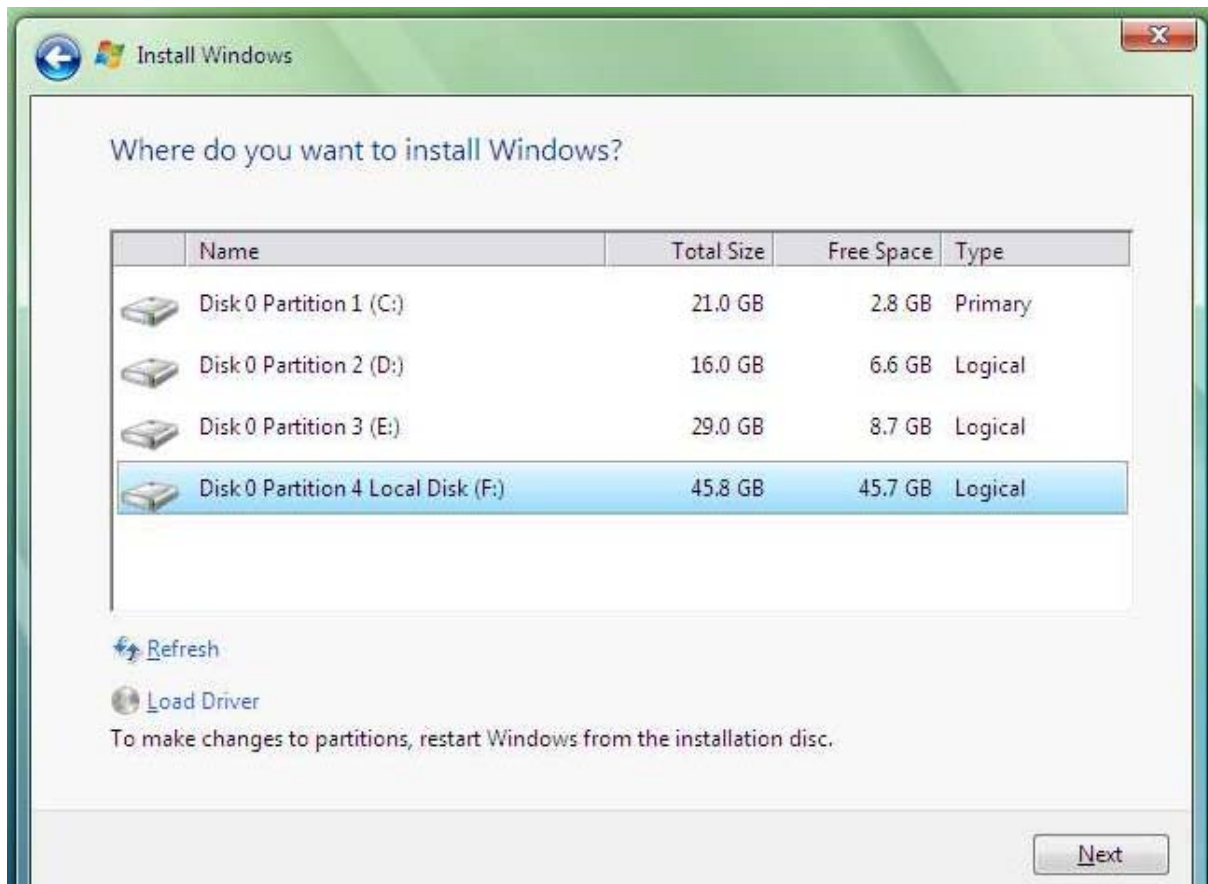
### Select Custom (Advanced) for New Install





## DUAL BOOT SYSTEMS – WINDOWS XP AND WINDOWS VISTA

### Select Disk Partition for New OS

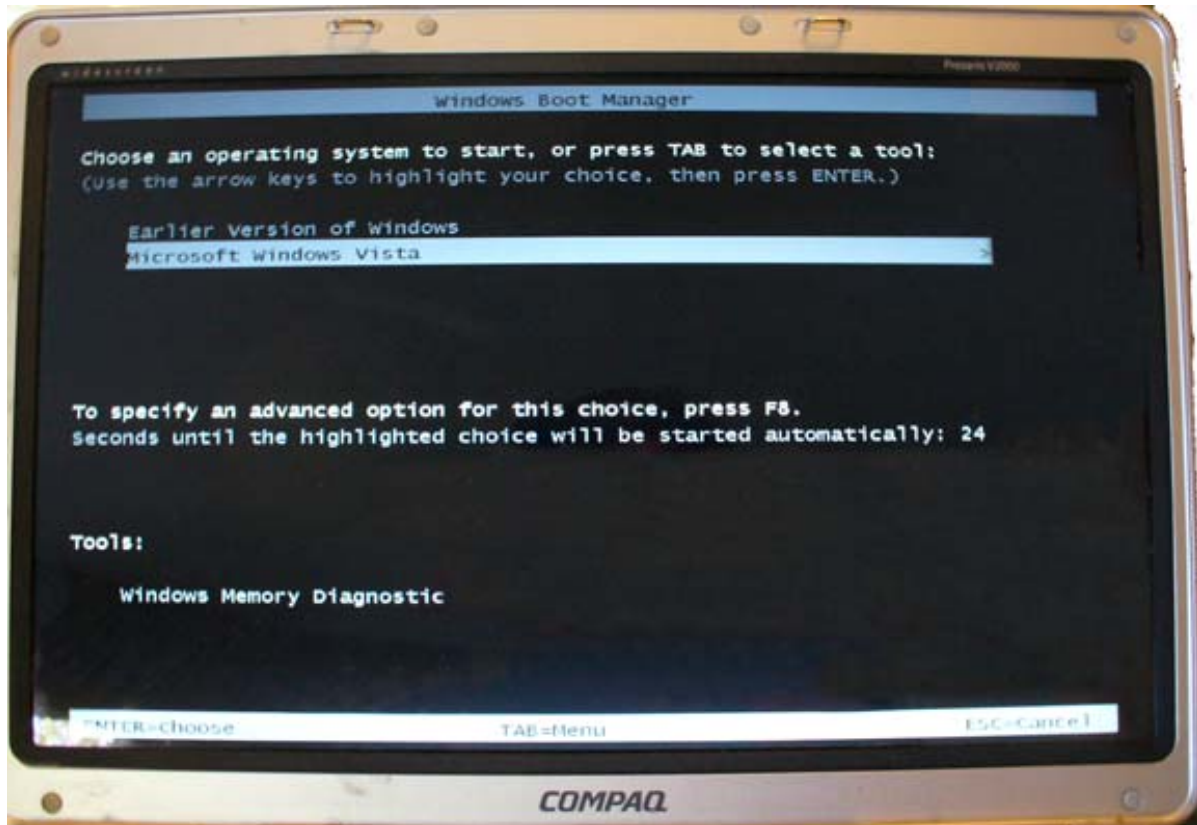






## DUAL BOOT SYSTEMS – WINDOWS XP AND WINDOWS VISTA

After Install Dual Boot Choices Are Given





## DUAL BOOT SYSTEMS – WINDOWS XP AND WINDOWS VISTA

Then Launch Vista System





## DUAL BOOT SYSTEMS – WINDOWS XP AND WINDOWS VISTA

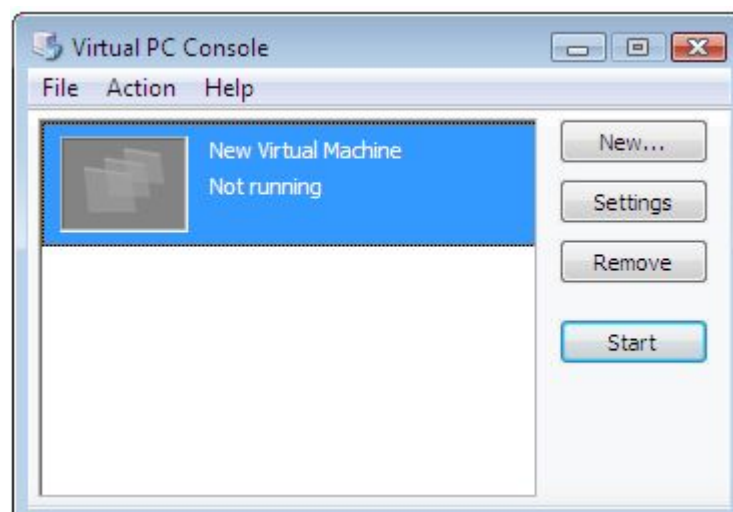
### Two Paths for Vista and XP on Same System

#2— New Vista System: Partition hard disk, adding partition for MS Virtual PC 7.0 running Windows XP. Virtual PC runs under Vista and both systems can run simultaneously.

Required: XP “OEM” or “Complete” system installation disks.  
Recommended: 2.0 GHz Processor, 2GB RAM, and 120Mb Hard Disk minimum.

Note: XP and Vista CAN run simultaneously, and DO NOT require re-boot to move from system to system. Virtual PC DOES NOT support USB devices, BUT Network Printer and Disk Sharing can overcome this limitation in most cases.

### Virtual PC 7.0 Console





## DUAL BOOT SYSTEMS – WINDOWS XP AND WINDOWS VISTA

### Setting Up Virtual Machine Operating System

New Virtual Machine Wizard

**Operating System**  
Select the operating system you plan to install on this virtual machine.

Selecting an operating system here allows the wizard to recommend appropriate settings for this virtual machine. If the desired guest operating system is not listed, select an operating system that requires an equivalent amount of memory or select Other.

Operating system:	Default hardware selection:
<input type="text" value="Windows XP"/>	Memory: 128 MB
	Virtual disk: 65,536 MB
	Sound: Sound Blaster 16 compatible

< Back    Next >    Cancel



## DUAL BOOT SYSTEMS – WINDOWS XP AND WINDOWS VISTA

### Selecting Amount of Memory

New Virtual Machine Wizard

**Memory**  
You can configure the RAM on this virtual machine.

To improve the performance of this virtual machine and run more applications on its operating system, increase the amount of RAM allocated to it. To leave more RAM for other virtual machines on your system, use the recommended RAM allocation.

Recommended RAM: [128 MB]

Allocate RAM for this virtual machine by:

Using the recommended RAM

Adjusting the RAM

Set the RAM for this virtual machine:

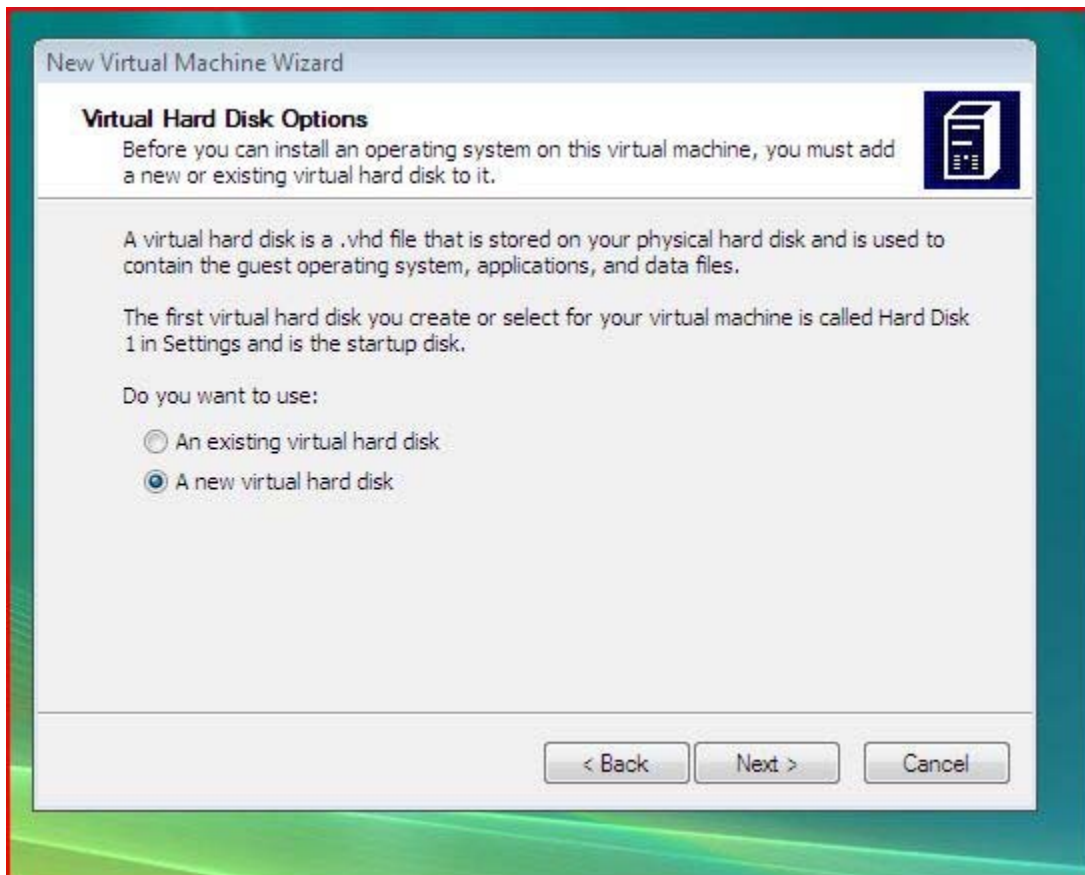
64 MB  MB 1501 MB

< Back Next > Cancel



## DUAL BOOT SYSTEMS – WINDOWS XP AND WINDOWS VISTA

### Setting Up Hard Drive





## DUAL BOOT SYSTEMS – WINDOWS XP AND WINDOWS VISTA

### Defining Hard Drive Size

The screenshot shows the 'New Virtual Machine Wizard' dialog box, specifically the 'Virtual Hard Disk Location' step. The dialog has a title bar 'New Virtual Machine Wizard' and a sub-header 'Virtual Hard Disk Location'. Below the sub-header is a description: 'This wizard creates a dynamically expanding virtual hard disk with the specified size.' To the right of this text is a small icon of a hard disk. The main area contains instructions: 'Type a name for the new virtual hard disk. Unless you specify a different location, the virtual hard disk file will automatically be saved in the same location as the virtual machine configuration file.' Below this is a label 'Name and location:' followed by a text input field containing 'F:\SIR Virtual Machine\SIR Virtual Machine Hard Disk.vhd' and a 'Browse...' button. Further down, there are two rows of labels and values: 'Maximum virtual hard disk size: 130,557 MB' and 'Virtual hard disk size: 65536 MB'. At the bottom of the dialog are three buttons: '< Back', 'Next >', and 'Cancel'. The entire dialog is set against a teal and green background with a red border.

New Virtual Machine Wizard

**Virtual Hard Disk Location**

This wizard creates a dynamically expanding virtual hard disk with the specified size.

Type a name for the new virtual hard disk. Unless you specify a different location, the virtual hard disk file will automatically be saved in the same location as the virtual machine configuration file.

Name and location:

F:\SIR Virtual Machine\SIR Virtual Machine Hard Disk.vhd

Maximum virtual hard disk size: 130,557 MB

Virtual hard disk size: 65536 MB

To learn more about the different types of virtual hard disks, see Virtual PC Help. For advanced virtual hard disk options, use the Virtual Disk Wizard.

< Back    Next >    Cancel



---

## DUAL BOOT SYSTEMS – WINDOWS XP AND WINDOWS VISTA

---

Then Launch XP System







## DUAL BOOT SYSTEMS – WINDOWS XP AND WINDOWS VISTA

The Primary Reason I Created  
A Dual Boot System?

To See If I Could !

This presentation is available at:  
[www.sir-web.org/computer/dual-boot.pdf](http://www.sir-web.org/computer/dual-boot.pdf)

Microsoft Virtual PC Available at:

[http://www.microsoft.com/windows/  
products/winfamily/virtualpc/  
overview.mspx](http://www.microsoft.com/windows/products/winfamily/virtualpc/overview.mspx)