



Making a Custom Photo Collage with Photoshop Elements

SIR Phil Goff, Branch 116
February 17, 2011



Making Inexpensive Collages with Photoshop Elements

- Goal is to make an attractive 16"x20" collage at a low price.
- You can buy mats, have prints made of special sizes, etc, but this is time consuming and expensive.
- A simpler way is to print the frames around pictures of your choice.
- I use software sold by shutterfreaks.com and it costs \$11.95.
- Similar software is available in PSE, but the shutterfreaks add-ins make thing very easy.



Purchase Digital Frames from Shutterfreaks.com

- Log into shutterfreaks.com and click on Photoshop Elements Actions.
- Select the version of PSE you are using (I use 8.0)
- Select AC's Big Mats for Printing, and pay \$11.95 via credit card.
- Purchase more things if you like but not necessary for this demonstration.
- Download your purchased software and follow directions to copy the files to PS Elements.



Making Inexpensive Collages with Photoshop Elements

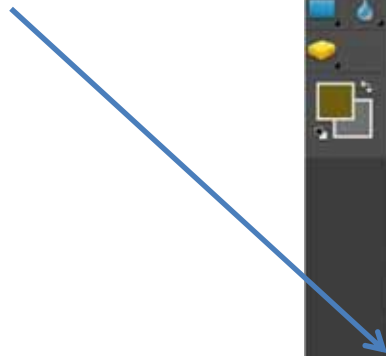
- I will make a 16" x 20" print suitable for wall hanging. It costs \$5.99 for the photo at Costco. Printed locally and is ready for pick up in a few hours.
- First, think about your arrangement and sizing of pictures. You can make changes but its easier if you have a plan.
- I will use 2 horizontal photos on top and bottom with 3 vertical photos in the middle. This is only a simple example.
- Select the photos you wish to use from PS Organizer and open them in PS Editor under Full Edit.



Bring Photos into PSE Editor

Open the Editor for Full Editing.

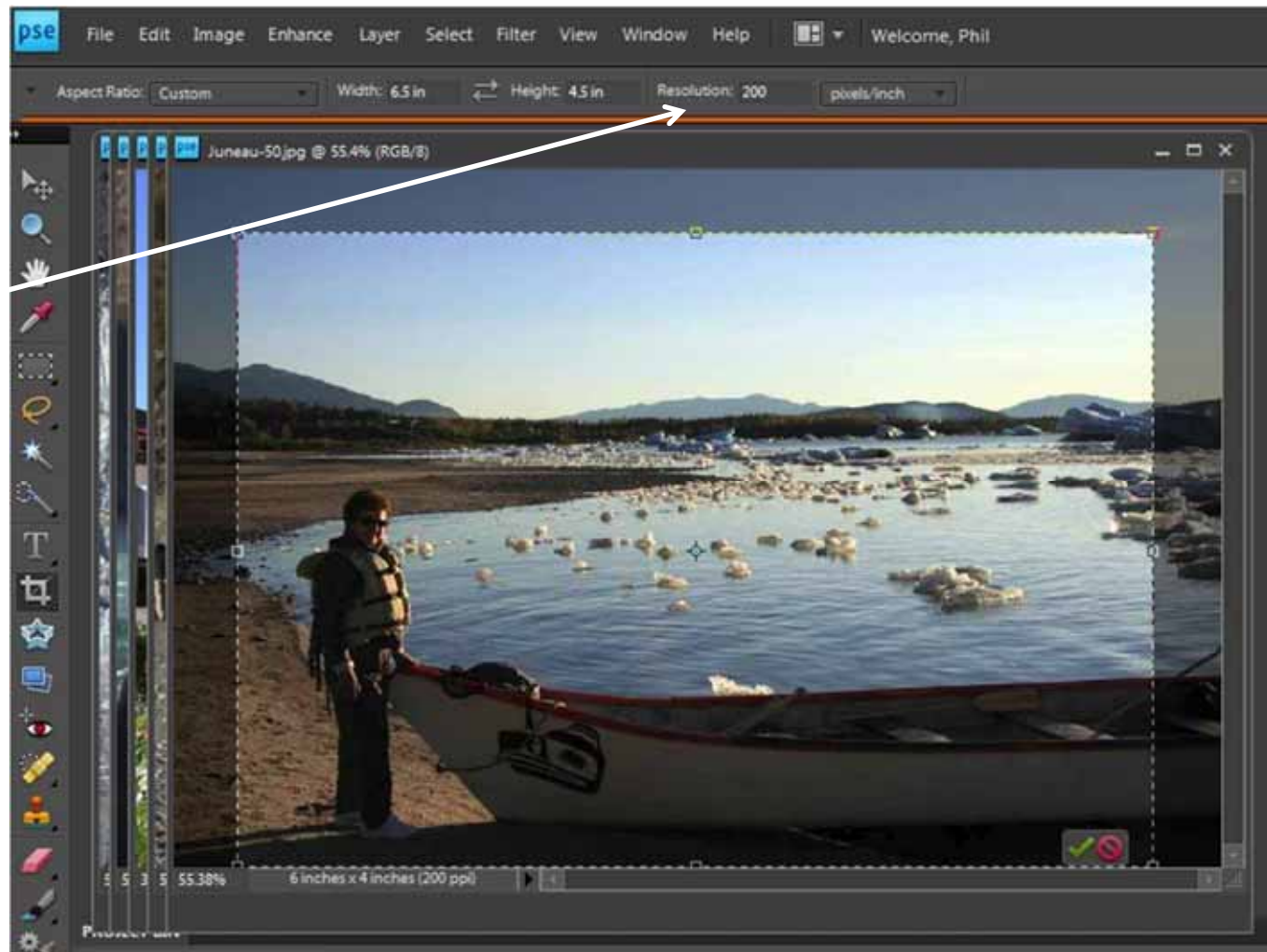
Bring in your full resolution pictures





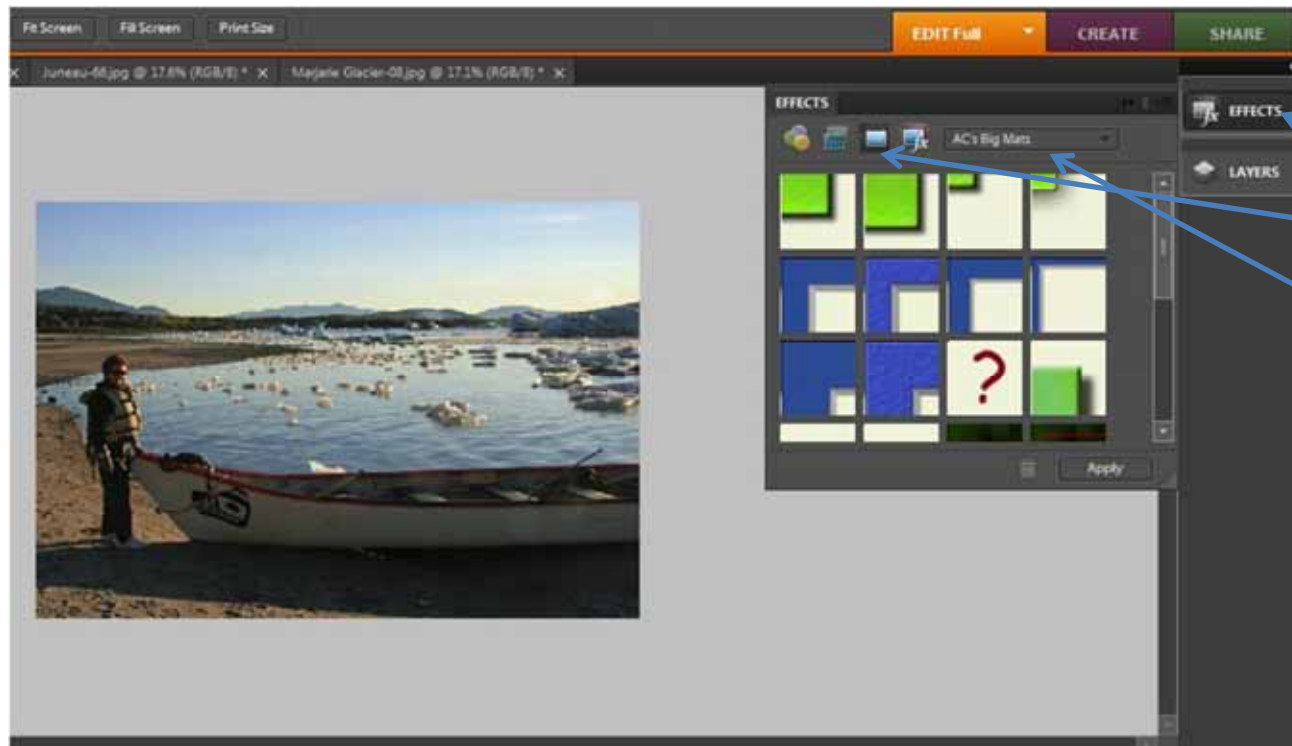
Crop the Picture to the Desired Size at 200 ppi Resolution

Crop picture to approximate finished size. I 200 dpi resolution





Prepare to add Mat to Cropped Picture

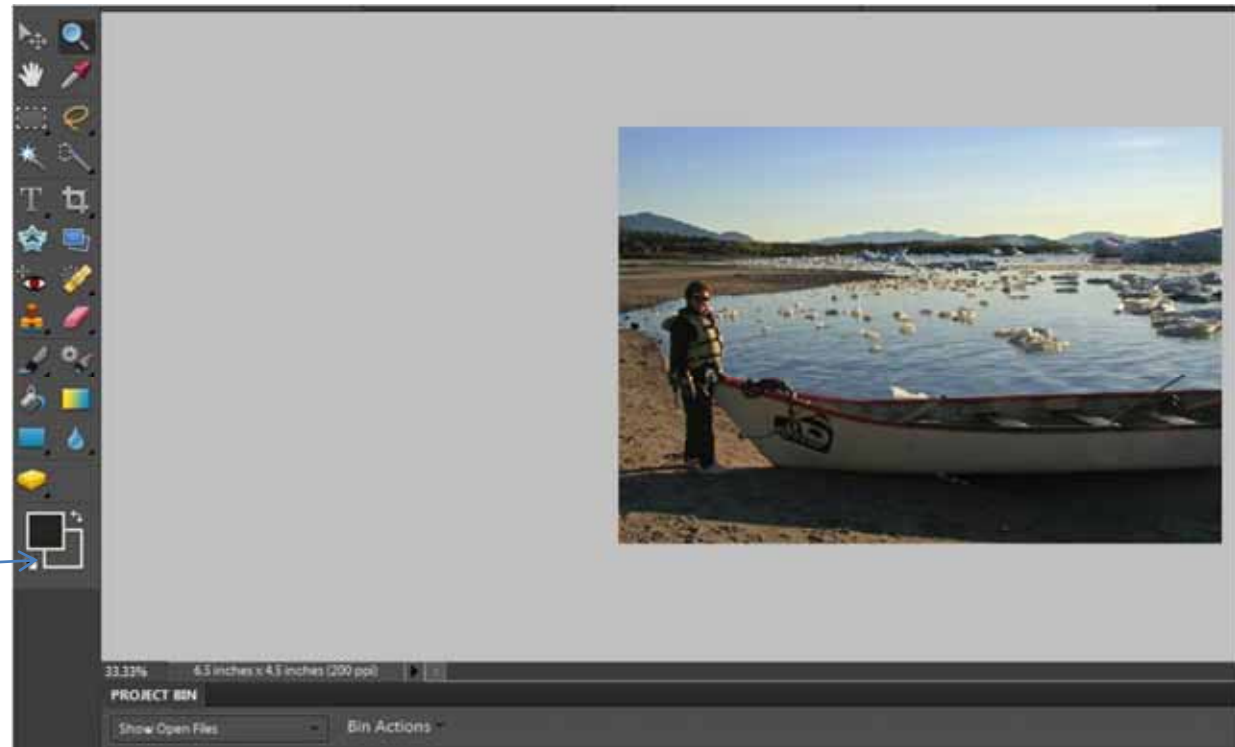


Select Effects.
Click on icon
for Photo
Effects and
select AC's Big
Mats to see
various Mats
available for
framing picture.



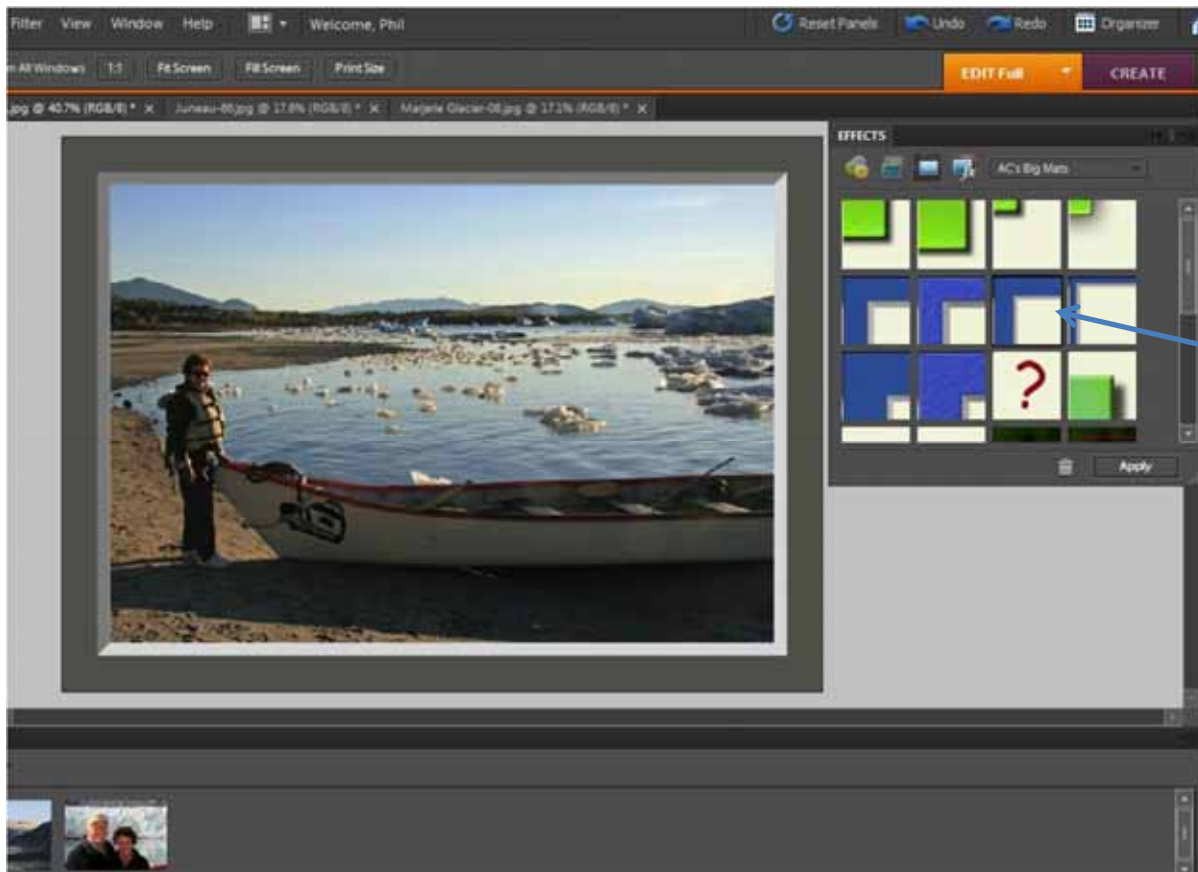
Select Mat Color Before Framing Picture

Before you frame the picture, select the color you want for the outside frame.





Drag the Mat Onto the Picture for Framing

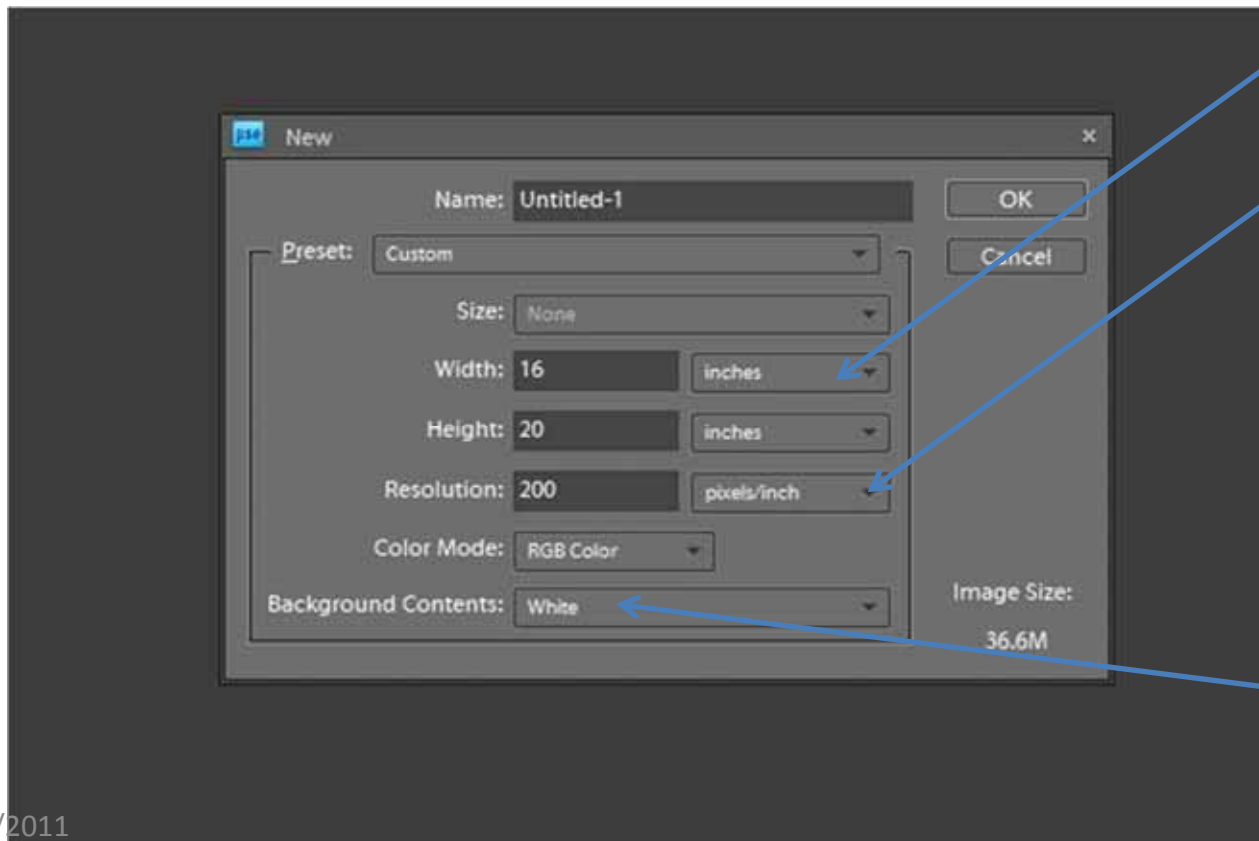


Drag one of the Mats onto the picture. The frame will be the color you selected earlier. To change the Mat, click on Undo button at the top.



Prepare The Background Sheet

- Frame each picture to your desired color and shape.
- Click on File – New to create a new blank file sized at 16 inches by 20 inches



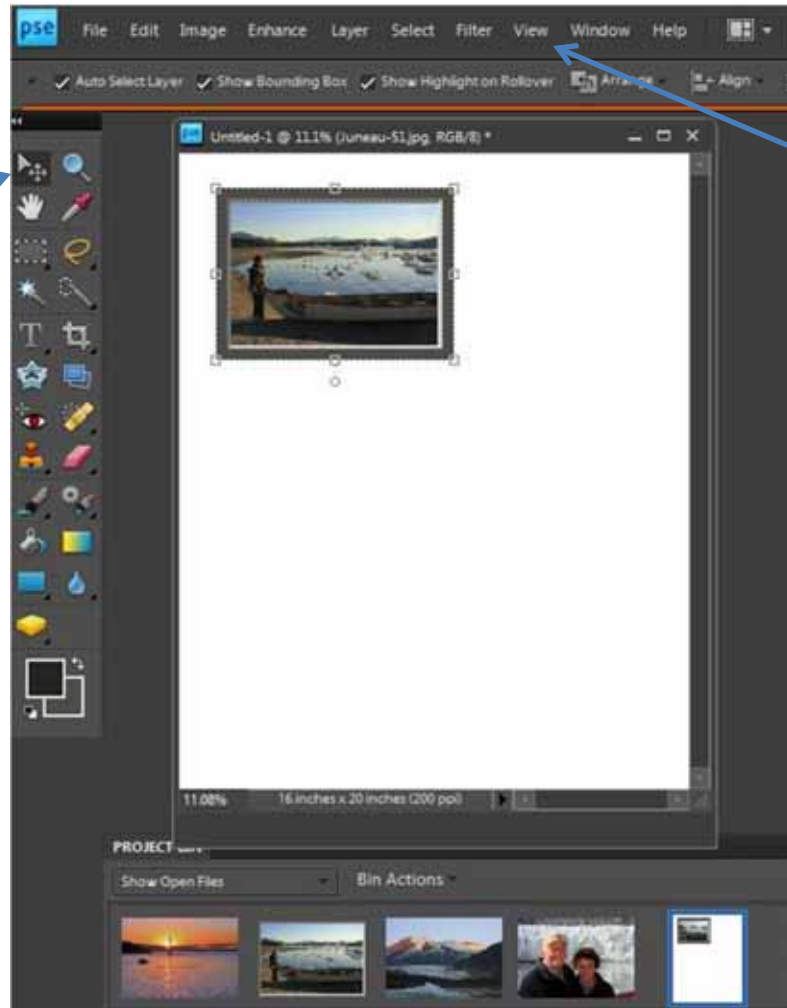
Set resolution at 200 ppi.

Default color is White but you may change.



Drag Framed Pictures from Bin onto Mat

Click on icon to make picture active for moving and resizing.



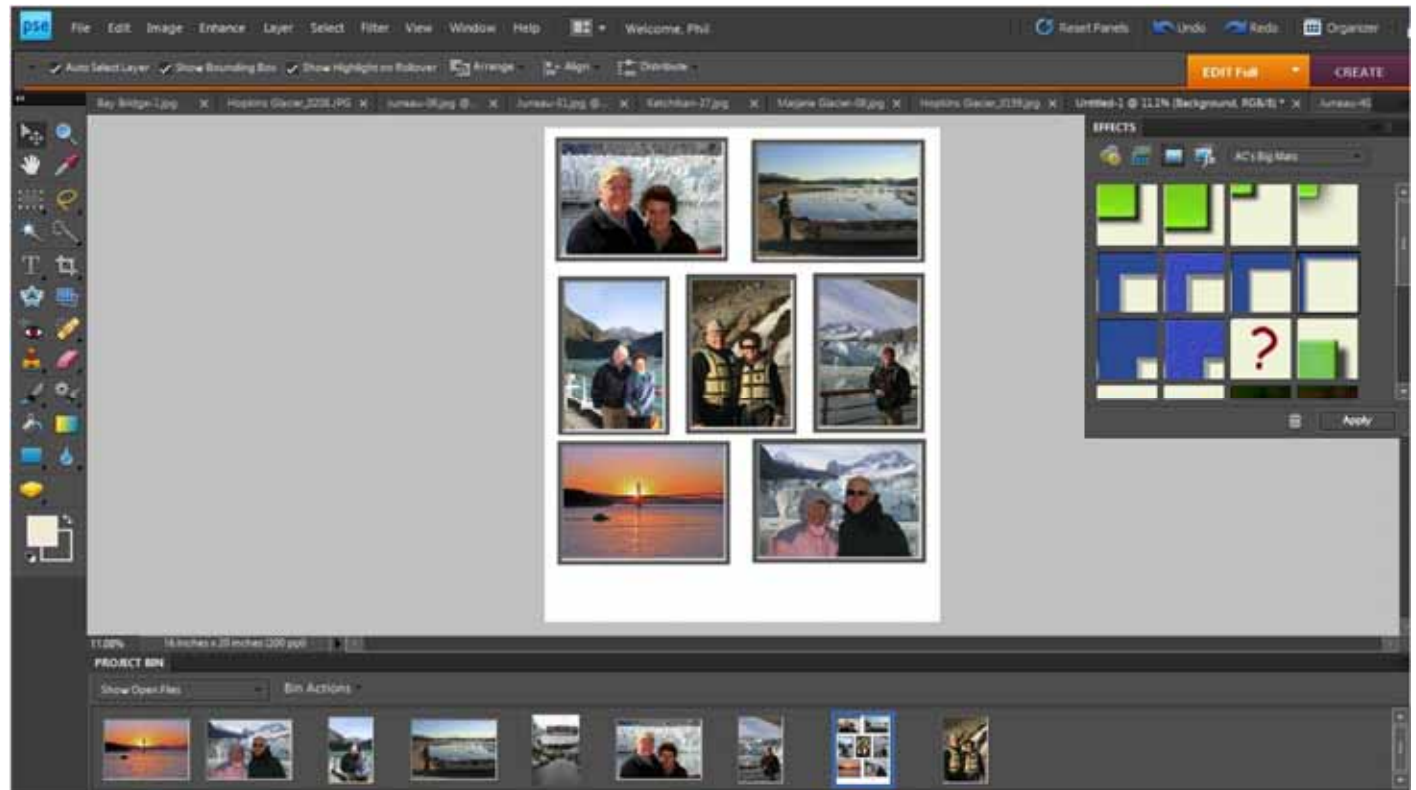
Click on "View" , "Grid lines" to help position the pictures.

Resizing pictures on the Mat changes frame width. Don't resize too much!



Drag Framed Pictures from Bin onto Mat

Position the pictures where you want them. You may resize them on the Mat but be aware the frame size will change also. Small changes are OK.





Click on Individual Pictures to Move or Resize



You can make a single picture active by clicking on it. Move or Resize the picture as you wish.



Add Text to the Finished Collage

Click on the “Text” tool, set the size and color of the font.





Adding Text and Printing

- When finished, save the collage as a single picture. Save it as a “PSD” file if you want to work on it again. Save it as a “Jpeg” if you are ready to print.
- Upload the finished Jpeg to Costco Photo.
- Specify a 16” x 20” print. Finish must be luster.
- Print will be ready in a few hours.

It's Easy and Fun. Just Do It!